



Sika[®] AnchorFix-2

High Performance Fast Curing Anchoring Adhesive

Technical Data Sheet

DESCRIPTION

Sika AnchorFix-2 is a single cartridge, two component, fast curing, solvent and styrene free epoxy acrylate based chemical anchoring adhesive.

USES

As a high performance injection anchoring adhesive for all types of:

- * Steel reinforcement
- * Threaded rods
- * Masonry wall ties
- * Bolts
- * Profiled sections
- * Anchor sockets
- * Special fastening systems

Into the following substrates:

- * Concrete
- * Brickwork
- * Blockwork
- * Hollow and solid masonry
- * Solid natural stone
- * Solid rock
- * Steel

ADVANTAGES

- * Easy to use
- * Standard sealant guns can be used
- * Fast curing
- * Very high load capacity
- * Thixotropic for overhead and vertical applications
- * Solvent and styrene free
- * Low odour
- * Low waste

Technical Data (typical)

Colour: Component A: light green
Component B: black
Component A+B (mixed): grey

Density: ~1.65 kg/litre (mixed)

Application temperatures: 0°C min - +35°C max
(substrate and ambient)

Gel and Curing times:

Substrate temperature	Open time T _{gel} (min)	Curing time T _{cure} (min)
0°C	32	180
5°C	18	90
20°C	5	40
35°C	2.5	25

* Cartridge stored @ +5°C

Gel and curing times may vary depending on substrate temperatures ie cold substrates will reduce values and hot substrates will increase values.

Load Capacity Data: Refer to separate information sheet

All above values are approximate.

SUBSTRATE PREPARATION FOR MAXIMUM LOAD BEARING CAPACITY

All surfaces must be sound, clean, free from standing water and loosely adhering particles and other contaminants. On damp substrates adhesion and load bearing capacity will be reduced. Carry out pull out tests to ascertain suitability.

HANDLING



1 Unscrew cap from cartridge



2 Pull out the red plug.



3 Cut the plastic liner below the red plug and discard plug.



4 Attach the static mixer nozzle to cartridge.

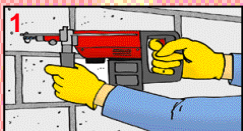


5 Insert cartridge into the sealant gun.

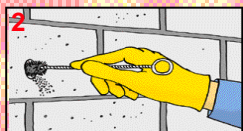
HOW TO USE

Solid Substrates

Drill a hole with a hammer action drill to the diameter and depth required. Drill hole diameter must be in accordance with anchor size.



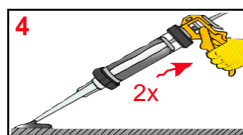
Hole must be thoroughly cleaned 3 times by brush of correct diameter ie minimum 2.0mm greater than diameter of hole.



After each brushing cycle clean the hole with a vacuum or blow-out pump or with a compressor. Important! An oil free compressed air line must be used.



Gun (approx. 2 trigger pulls) until a uniform grey appearance and consistency is obtained, through the mixing nozzle. Do not use unmixed material!



Handling Precautions

Sika products are generally harmless provided that certain precautions normally taken when handling chemicals are observed. The materials must not, for instance, be allowed to come in contact with foodstuffs or food utensils and measures should also be taken to prevent the uncured materials from coming in contact with the skin, since people with particularly sensitive skin may be affected. The use of protective clothing, goggles, barrier creams and rubber gloves is required. The skin should be thoroughly cleaned at the end of each working period either by washing with soap and warm water or by using a resin-removing cream - the use of powerful solvents is to be avoided. Disposable paper towels - not cloth towels - should be used to dry the skin. Adequate ventilation of the working area is recommended. In case of accidental eye or mouth contact, flush with water - consult a doctor immediately. Health and Safety information on Sika Products is available and we strongly advise that this is read prior to their use. Sika products are for professional use and should be stored in sealed containers away from the reach of children.

Important Note

The information, and, in particular, the recommendations relating to the application and end-use of Sika products, are given in good faith based on Sika's current knowledge and experience of the products when properly stored, handled and applied under normal conditions. In practice, the differences in materials, substrates and actual site conditions are such that no warranty in respect of merchantability or of fitness for a particular purpose, nor any liability arising out of any legal relationship whatsoever, can be inferred either from this information, or from any written recommendations, or from any other advice offered. The proprietary rights of third parties must be observed. All orders are accepted subject to our current terms of sale and delivery. Users should always refer to the most recent issue of the Technical Data Sheet for the product concerned, copies of which will be supplied on request.

Please consult our Technical Sales Department for further information

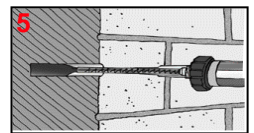
SIKA LIMITED

Watchmead, Welwyn Garden City, Hertfordshire, AL7 1BQ

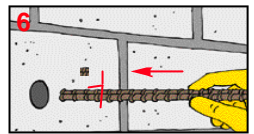
Tel: 01707 394444 Email: sika@uk.sika.com

Fax: 01707 329129 www.sika.co.uk

Inject adhesive from the rear of the hole. Slowly withdraw the nozzle as the hole fills. Prevent air bubbles under any circumstances. For deep holes extension tubing can be used.



Place the rods, rebars or other anchor systems into the hole while twisting slightly. **Important:** Placing of anchor must be done within the open time of the adhesive.



Leave the fixing until curing time has elapsed before attaching and securing any fixtures.



Hollow Substrates

After drilling holes, insert the correct perforated sleeve type into drilled hole and carry out steps 4-7 as above.

IMPORTANT CONSIDERATIONS

- * At higher temperatures gel and cure time will be shortened.
- * At lower temperatures the material will become more difficult to inject and take longer to harden.
- * Wear suitable protective clothing, gloves and eye protection.
- * Use sharp drills to prevent oversize or irregular diameter holes.
- * Do not use for underwater anchoring.
- * Material temperature for application should be between +5°C and +20°C

SYSTEM COMPONENTS

- * Static mixers.
 - * Hole cleaning brushes.
 - * Blow out pump.
 - * Extension tubing.
 - * Perforated sleeves for anchor and rod sizes M6 - M12
- All available from **Sika Limited**.

PACKAGING

300 ml and 550 ml cartridges.

STORAGE AND SHELF LIFE

Minimum 12 months in sealed containers stored in dry warehouse conditions (+5°C - +20°C).

